

# CTH3-A 800 T6 4kW F400 (279800106A)

## GENERAL DATA



### ROOF FAN, AL COWL, 400°C/2h

#### MANUFACTURING FEATURES

- Roof cowl made of aluminium
  - Structure, roof base support and bird protection guard made of galvanised steel.
  - High efficiency backward impeller with self-cleaning system of steel.
  - Standard asynchronous motor with IP-55 protection and Class F insulation.
- Manufactured with standard voltages: 230V 50Hz in single phase motors, 230/400V 50Hz in three phase motors and 400V 50Hz in 2 speed motors

#### APPLICATIONS

Specially designed for roof installation, they are suitable for:

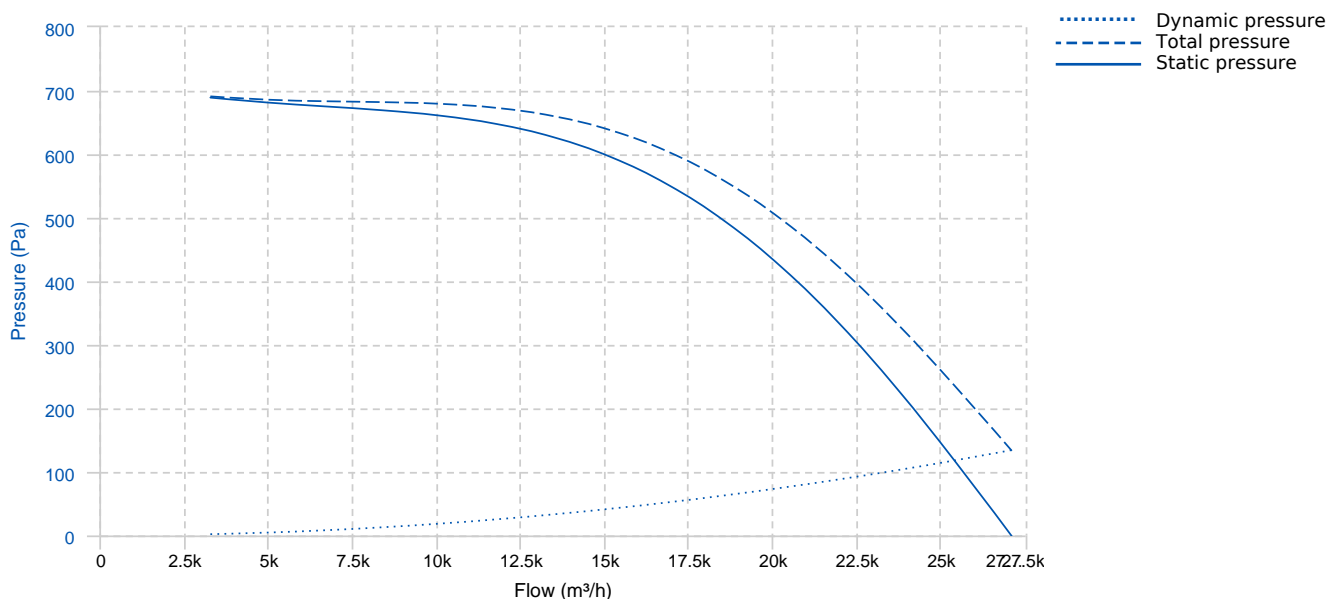
- Smoke extraction.
- Smoke emergency exhaust with motor outside the hazardous area.
- Air renewal in buildings and industries.
- Industrial and professional kitchen hoods.
- Maximum continuous working temperature: carried air 110°C, environment 60°C for three phase and 50°C for single phase motors.

#### UNDER REQUEST

- 60Hz and special voltages.
- Sparking proof fan with EEx\_d certified motor.

Official homologation by the European laboratory APPLUS according to EN 12101-3:2015  
Certification Nr: 0370-CPR-2656

## PERFORMANCE CURVE

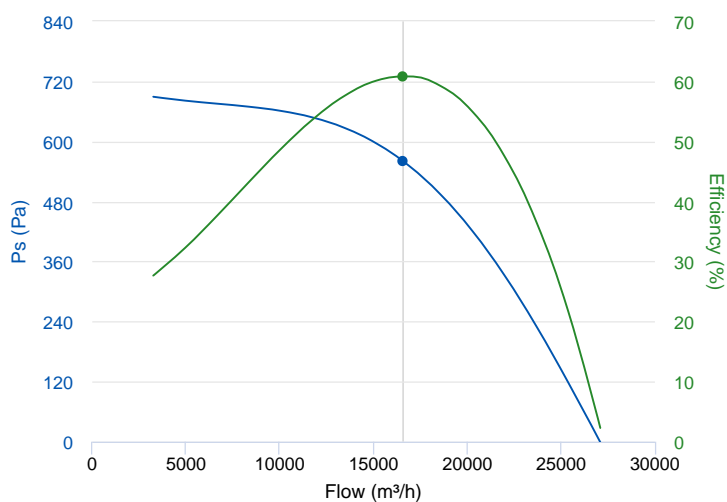


## TECHNICAL DATA

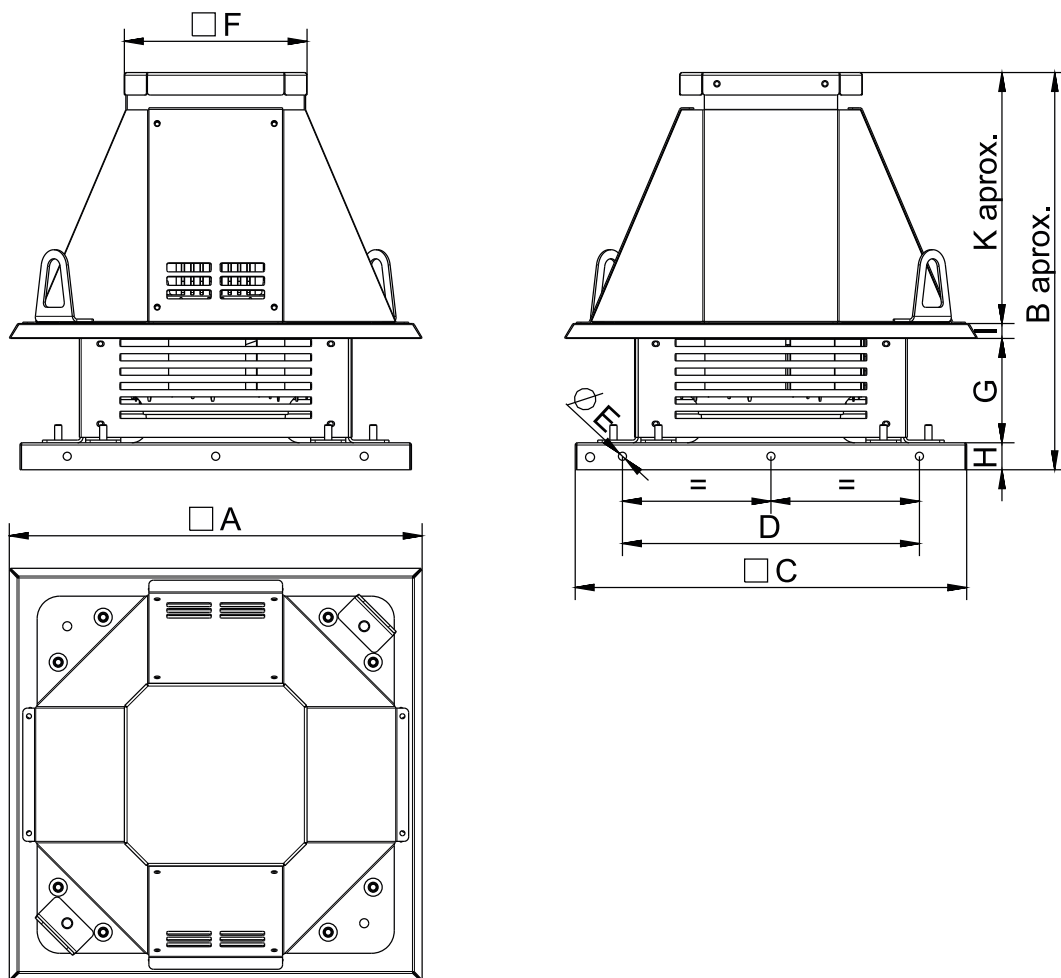
Fan							
RPM	960	Approx. weight	210 kg	Max. Flow	27090 m <sup>3</sup> /h		
Motor							
Power	4 kW	RPM	960	I max. (230V)	16,5 A	I max. (400V)	9,46 A
Size	132M	Approx. weight	68 kg	Efficiency (%)	86.8 %	FP	0.72

## ERP DATA

Fan data sheet		
Fan type	Unit for non-residential ventilation (LOT 6)	
Typology	Unidirectional	
reports.other	None	
Type of driver	None	
Motor power (kW)	4	
	Fan values	ERP Requirements 2018
Max. efficiency (%)	60.85	51.18
Effic. Heat recovery (%)	-	
Pabs (kW)	4.399	
Flow (m <sup>3</sup> /h)	16576.11	
Static pressure (Pa)	560.53	
Speed (m/s)	9.16	
SFP (W/m <sup>3</sup> /s)	955.36	



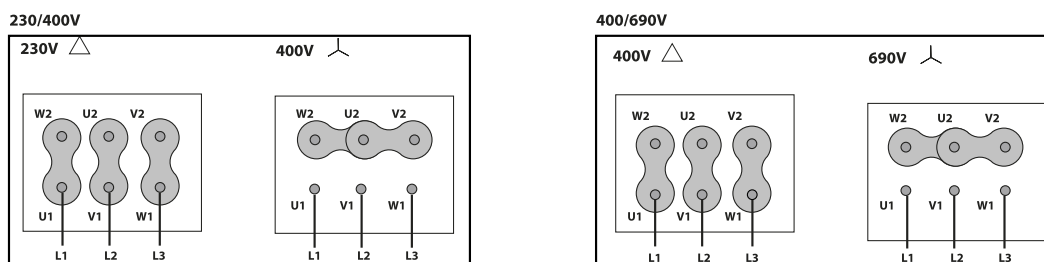
## DIMENSIONS



### Dimensions (mm)

A	1134,6	B aprox	1142,72	C	1035	D	840	E	9
F	453	G	468	H	50	I	31	K aprox	593,72

## WIRING DIAGRAM



## ACCESSORIES



**SAFETY SWITCH**  
**INT 25 3P A**  
**REF: INT253PA**



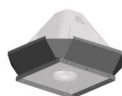
**SAFETY SWITCH FOR 400°C/2h**  
**INT 400 25A 3P**  
**REF: 508902501**



**FIXING KIT FOR CTH3**  
**KF 710-800**  
**REF: 960004660**



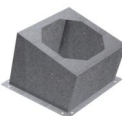
**CTH3 TILTING KIT**  
**KB 710-800**  
**REF: 960004560**



**CTH3 VERTICAL DISCHARGE**  
**KV CTH-3 710-800**  
**REF: 960004760**

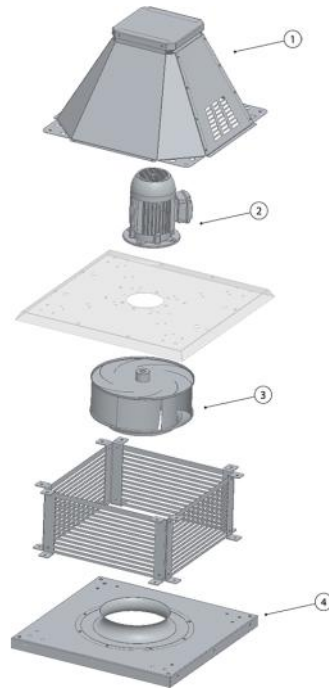


**FREQUENCY SPEED CONTROLLER**  
**SFC 400 III 12A \***  
**REF: SFC400III12**



**INCLINED ROOF FAN SUPPORT**  
**BTI 1015**  
**REF: A-508701015XX**

**SPARE PARTS**



	Code	Model	Qty
1	R-279718491	ROOF COWL CTH3-A 710-800	x1
2	721001271	MOTOR 4KW T6 B5 230/400V	x1
3	R-CTB-CTH801-38A LG	IMPELLER CTH3 801 D.38 LG	x1
4	R-279801772	INLET-FRAME CTH3 800	x1